

PLUMBING ROUGH-IN/FINAL CONNECTION SCHEDULE

ITEM	QTY	DESCRIPTION	WATER			DRAIN			GAS			REMARKS	ITEM
			COLD	HOT	AFF	DIRECT	INDIR.	AFF	SIZE	MBTUH	AFF		
K4	1	COMBI OVEN	3/4"	-	30"	-	2"	-	-	-	-	EXTEND WASTE TO FLOOR SINK	K4
K7	1	RANGE	-	-	-	-	-	-	3/4"	135	24"	-	K7
K10	1	WALK-IN FREEZER EVAP.	-	-	-	-	2"	-	-	-	-	EXTEND WASTE TO FLOOR SINK	K10
K11	1	WALK-IN COOLER EVAP.	-	-	-	-	2"	-	-	-	-	EXTEND WASTE TO FLOOR SINK	K11
K12.1	1	WORK TABLE WITH SINK	1/2"	1/2"	STUB	-	2"	-	-	-	-	EXTEND WASTE TO FLOOR SINK	K12.1
K14	2	HAND SINK	1/2"	1/2"	20"	2"	-	18"	-	-	-	EXTEND WASTE TO FLOOR SINK	K14
K18	1	3 COMP SINK	(2)1/2"	(2)1/2"	(2)24"	-	(3)2"	-	-	-	-	EXTEND WASTE TO FLOOR SINK TWO HOT AND COLD WATER LINES	K18
K19	1	DISHWASHER, UNDERCOUNTER	-	1/2"	12"	-	1"	-	-	-	-	EXTEND WASTE TO FLOOR SINK	K19
K31	1	ICE CUBER WITH BIN	1/2"	-	STUB	-	1/2"	-	-	-	-	EXTEND WASTE TO FLOOR SINK	K31
K33	1	HOT WELLS	-	-	-	-	(2)1"	-	-	-	-	EXTEND WASTE TO FLOOR SINK	K33

PLUMBING SYMBOLS

- COLD WATER
- HOT WATER
- DRAIN DIRECT
- DRAIN INDIRECT
- FLOOR SINK (SIZE GRATE AS REQUIRED)
- ⊕ GAS

PLUMBING ABBREVIATIONS

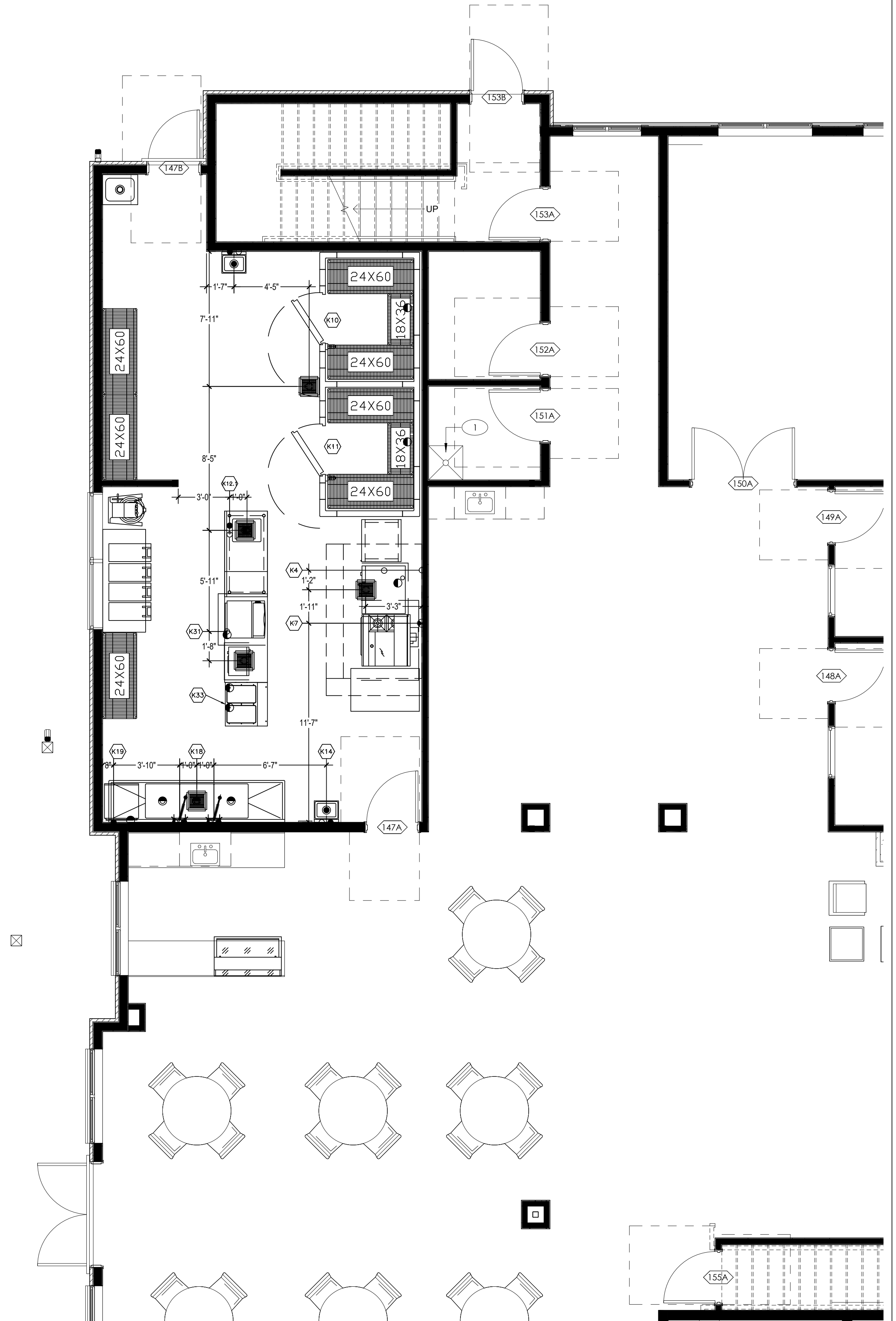
- CW COLD WATER
- HW HOT WATER
- FS FLOOR SINK
- AFF ABOVE FINISHED FLOOR
- BFF BELOW FINISHED FLOOR
- DR DRAIN

PLUMBING NOTES

1. THE PURPOSE OF THESE PLANS IS TO SHOW CONNECTIONS FOR THE KITCHEN EQUIPMENT ONLY. REFER TO THE ARCHITECT OR CONTRACTOR FOR BUILDING OR OTHER REQUIREMENTS.
2. PLUMBER IS TO FULLY INSTALL AND CONNECT ALL EQUIPMENT AND IS TO FURNISH ALL NECESSARY MATERIALS REQUIRED TO COMPLETE ALL OF THE INSTALLATIONS.
3. PLUMBER MUST OBTAIN ALL NECESSARY PERMITS FOR HIS REQUIRED WORK. PLUMBER MUST WORK ACCORDING TO ALL OF THE LOCAL CODES AND REGULATIONS.
4. GREAT EFFORT HAS BEEN MADE TO DRAW THESE DRAWINGS AND CHECKS WITHOUT ERROR. HOWEVER, OMISSIONS AND/OR ERRORS DO NOT RELIEVE THE PLUMBER'S RESPONSIBILITY TO COMPLETE ALL PLUMBING REQUIREMENTS AND INSTALLATIONS.
5. PLUMBER TO VERIFY ALL EXISTING EQUIPMENT AND CONNECTION REQUIRED.

ENLARGED KITCHEN PLUMBING FLOOR PLAN

SCALE : 1/4" = 1'-0"



MIDVALE ASSISTEN LIVING
 PRELIMINARY PLAN
 NOT FOR CONSTRUCTION USE

SHEET TITLE: FOOD SERVICE EQUIPMENT PLAN
 EQUIPMENT FLOOR PLAN
 DRAWN BY: DILLON HANSEN
 SCALE: 1/4" = 1'-0"
 PROJECT NO: 09/21/16
 REVISIONS: 1

SHEET NUMBER
K2
 K2 OF K3

ELECTRICAL ROUGH-IN/FINAL CONNECTION SCHEDULE

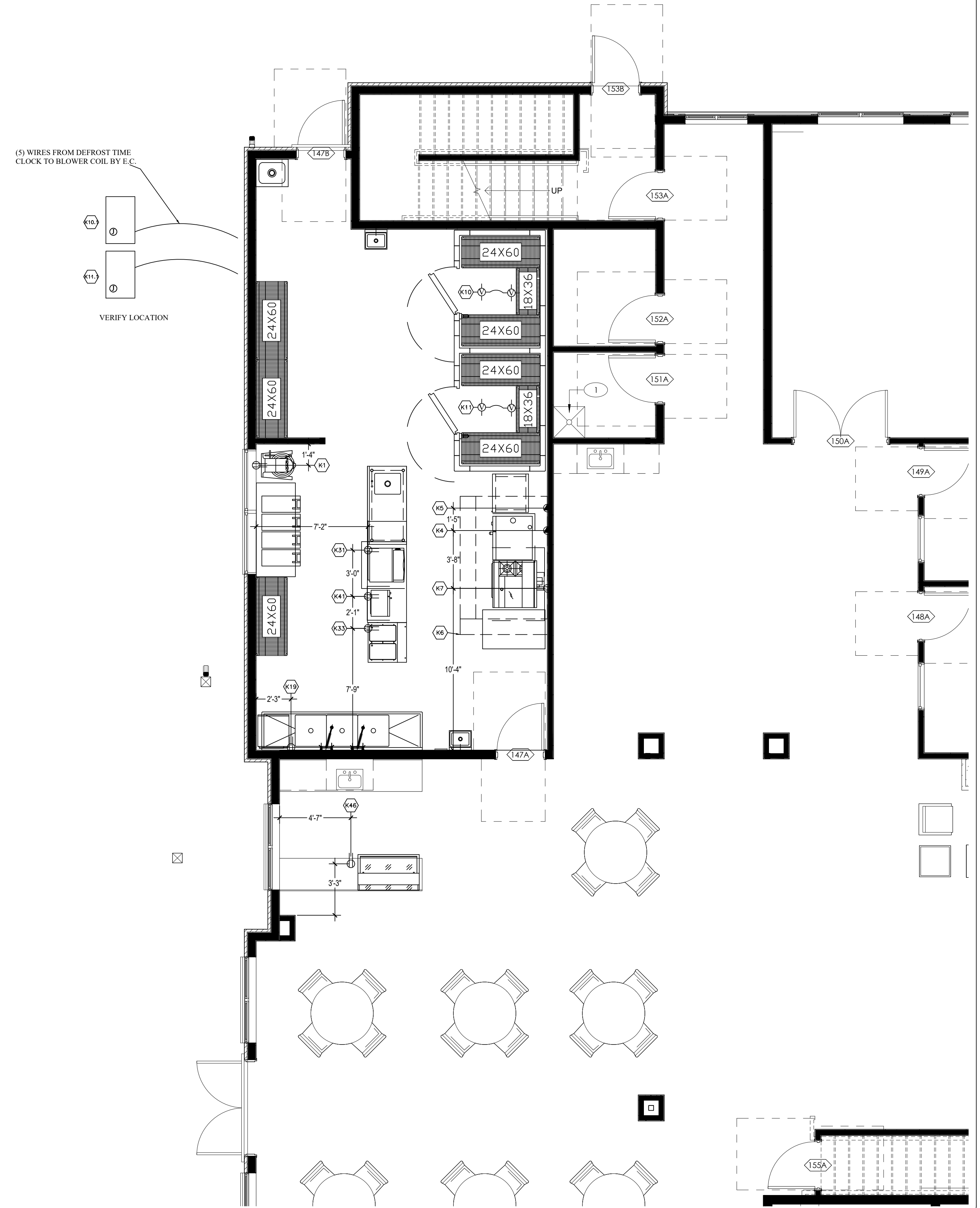
ITEM	QTY	DESCRIPTION	AMPS	VOLTS/CYL/PHASE	DIRECT PLUG	NEMA	AFF	REMARKS	ITEM
K1	1	30QT MIXER	16.0	115/60/1		X	24"		K1
K4	1	COMBI OVEN	70.0	208/60/3		X	24"		K4
K5	1	BLAST CHILLER	7.0	208/60/1		X	24"		K5
K6	1	EXHAUST HOOD	3.9	208/60/3	X		DFA	SEE CAPTIVE/ARE DRAWING	K6
	1	EXHAUST HOOD M.U.A.	3.9	208/60/3	X		DFA	SEE CAPTIVE/ARE DRAWING	
K7	1	RESTAURANT RANGE	4.0	120/60/1		X	24"		K7
K10	1	WALK-IN FREEZER LIGHTS	10.0	120/60/1	X		DFA		K10
K10.1		WALK-IN FREEZER COND. UNIT	7.0	208/60/1	X		ROOF		K10.1
		WALK-IN FREEZER EVAP.	1.0	120/60/1	X		DFA		
K11	1	WALK-IN COOLER LIGHTS	10.0	120/60/1	X		DFA		K11
K11.1		WALK-IN COOLER COND. UNIT	13.0	208/60/1	X		ROOF		K11.1
		WALK-IN COOLER EVAP.	1.0	120/60/1	X		DFA		
K19	1	DISHWASHER, UNDERCOUNTER	16.0	120/60/1	X		24"		K19
K31	1	ICE CUBER	7.0	120/60/1	X		STUB		K31
K33	1	HOT FOOD SERVING COUNTER	12.5	120/60/1		X	STUB		K33
K41	1	MICROWAVE OVEN	9.6	120/60/1		X	STUB		K41
K46	1	ICE CREAM CABINET	6.7	120/60/1		X	STUB		K46

ELECTRICAL SYMBOLS	
⚡	SWITCH
⊕	VAPOR PROOF LIGHT
⊖	DROP FROM ABOVE
⊕	120 VOLT DUPLEX OUTLET
⊕	208 VOLT
⊕	JUNCTION BOX OR OUTLET (SIZE AS REQUIRED)

ELECTRICAL ABBREVIATIONS	
V	VOLTS
DFA	DROP FROM ABOVE
GFI	GROUND FAULT INTERRUPTER
AFF	ABOVE FINISHED FLOOR
CLG	CEILING
FLR	FLOOR

ELECTRICAL NOTES	
1.	THE PURPOSE OF THESE PLANS IS TO SHOW CONNECTIONS FOR THE KITCHEN EQUIPMENT ONLY. REFER TO THE ARCHITECT OR CONTRACTOR FOR BUILDING OR OTHER REQUIREMENTS.
2.	ELECTRICIAN IS TO FULLY INSTALL AND CONNECT ALL EQUIPMENT AND IS TO FURNISH ALL NECESSARY MATERIALS REQUIRED TO COMPLETE ALL OF THE INSTALLATIONS.
3.	ELECTRICIAN MUST OBTAIN ALL NECESSARY PERMITS FOR HIS REQUIRED WORK. PLUMBER MUST WORK ACCORDING TO ALL OF THE LOCAL CODES AND REGULATIONS.
4.	GREAT EFFORT HAS BEEN MADE TO DRAW THESE DRAWINGS AND SCHEDULES WITHOUT ERROR, HOWEVER OMISSIONS AND/OR ERRORS DO NOT RELIEVE THE ELECTRICIAN'S RESPONSIBILITY TO COMPLETE ALL ELECTRICIAN REQUIREMENTS AND INSTALLATIONS.
5.	ELECTRICIAN TO VERIFY ALL EXISTING EQUIPMENT AND CONNECTION REQUIRED.

ENLARGED KITCHEN ELECTRICAL FLOOR PLAN
SCALE: 1/4" = 1'-0"



Bintz
Bintz Restaurant Supply Co.
1855 South 300 West
Salt Lake City, UT 84115
Office Fax
801-483-1515 801-483-1693 801-483-4746
www.bintzsupply.com
Copyright © 2008 Bintz Restaurant Supply Co.

**MIDVALE ASSISTEN LIVING
PRELIMINARY PLAN
NOT FOR CONSTRUCTION USE**

SHEET TITLE: FOOD SERVICE EQUIPMENT PLAN EQUIPMENT ELECTRICAL FLOOR PLAN			
DRAWN BY: DILLON HANSEN	SCALE: 1/4" = 1'-0"	FILE:	REVISIONS:
PROJECT NO:	DATE: 09/21/16	REVISION 1:	REVISION 2:

SHEET NUMBER
K3
K3 OF K3